

C2 Communications Controller

In-Home Communications. Page throughout the house. Enjoy in-home phone-to-phone conversations. Talk with visitors at the door – any door. All from any phone in your home.

For Everyday Living. “Dinner time!” “The phone’s for you!” “Get the door!” Tired of shouting and running? COM2 features are something you will use and come to rely on every day to simplify your life.

And a Whole Lot More. Unlatch the door to let a visitor in. Turn lights on and off. Open or close your garage door. Place a caller on hold . . . and be reminded that you did so. Do all this, and a whole lot more, from your existing telephones.

Patented Technologies & Design

In 1989, ELAN was the first to integrate a home’s standard touch-tone phones into multi-room audio systems, providing convenient and indispensable in-home communications from any room. Since then, features such as whole-house paging, phone-to-phone intercom and door station communications have become a part of the everyday lives of ELAN system owners.

In 1997, ELAN took in-home communications to the next level with another “first” – the Z600 – a stand-alone communications controller that could be used with any multi-room system and added digital door chimes, phone-triggered relays, and enhanced page & door station voice quality to the mix. Now, the C2 sets an even higher standard with new

features that transform any multi-room audio system into a multi-line communications network that seamlessly integrates intercom, telephone and automation features to create an environment of easy in-home communications.

More Lines, More Doors, More Chimes

C2 now makes available ELAN telecom features from two independent phone lines. With many homes now having more than one line, the C2 allows you communicate throughout the home regardless of which one you’re on.

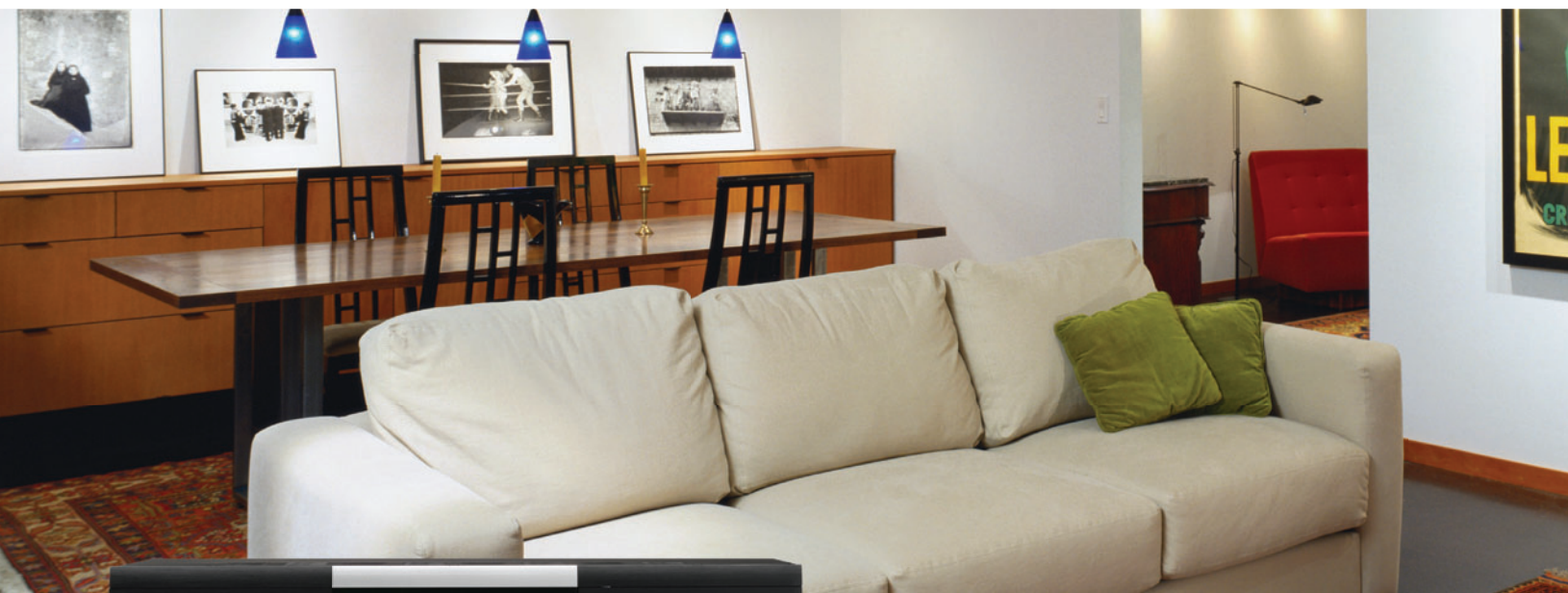
Front door, back door, guest house or the gate at the end of your driveway. Converse with visitors at up to four independent ELAN door stations. And, with the door latch

activation feature, you can even let them in (if you want to).

Which door’s which? The C2 features 10 user-selectable door chimes that let you differentiate between door stations. Unique chimes, such as sleigh bells, a fog horn and even a barking dog make for fun door announcements that can easily be changed for the occasion.

Quick, Easy & Intuitive

P for Page. **D** for Door. **H** for Hold. **M** for Mute. Each button on your phone, preceded by a # sign, does exactly what you’d expect it to do. Have more than one door station? D1 through D4 connects you to each door station independently. You can even program your phone’s “speed dial” numbers for one-button access to any C2 feature.



elanhomesystems.com

ELAN[®]
HOME SYSTEMS

C2 Communications Controller

Features

- Convenient alternative to on-wall intercoms & expensive phone systems
- Integrates seamlessly with any multi-room audio system
- Uses standard touch-tone telephones
- High-quality, whole-house paging & door chimes through your multi-room system's speakers
- Phone-to-phone intercom
- Caller-on-hold
- Music-on-hold
- On-hold & off-hook alerts (defeatable)
- Whole-house music mute
- 4 phone-activated triggers control lights, garage doors & more

- Door latch control for up to 4 doors
- Rack-mount ears included

New Features

- Dual telco inputs for ELAN features on 2 telephone lines
- Independent access of up to 4 ELAN Door Stations
- 10 user-selectable digital door chimes
- Audible door chime at door stations (defeatable)
- Caller ID info & voice mail pass-thru
- 48V operation compatible with most multi-line phones
- Enhanced surge protection
- Standard phone company dial tone
- USB port for downloading future enhancements



Specifications

- C.O. Access Lines** 2
- House Phone Battery Voltage** 48VDC
- AC Power Requirements** 120VAC, 25W
- Phone In/Out, Line 1/Line 2**
- Connector (2) RJ-14
- Music-on-Hold (MOH) Input**
- Connector RCA-type, line level
- Input level (mono) 0 to 2.5V p-p max, adjustable
- Page/Doorbell (P/DB) Output**
- Connector RCA-type, line level
- Output level (mono) 0 to 2.5V p-p max, adjustable
- Volume Control Override (VCO)**
- Connectors (4) 2-position (+/-) flip-lock
- Power Internal 1A, 12VDC power supply
- Relays (4)**
- Connector 3-position (NO/NC/COM) flip-lock
- Type Dry contact, 30VAC/DC @ 4A (max ea.)
- Trigger Inputs (2)**
- Connector 4-position flip-lock
- Type Dry contact, 12V current limited

- Trigger Outputs (4)**
- Connector35mm jack
- Type PG (page), DB1, DB2, SUM (page + DB1-4)
- Door Station Bus**
- Connector 4-position flip-lock
- Door Mic/Speaker Gain Range + 6dB
- Wire requirements Cat-5, 1000 ft. max.
- (C2 is compatible only w/ELAN DSS3, DSF3 & DSC3 Door Stations)
- LED Indicators**
- Line 1/Line2 Ring, on-hold, off-hook
- System Mute / telemute, page, DB 1-4, relay 1-4, power
- Audio Loop Inputs/Outputs**
- Connectors RCA-type, line-level
- Dimensions**
- C2 (in.) 17 W x 2-1/4 H x 12-1/2 D
(mm) 432 W x 58 H x 318 D
- C2R (in.) 19 W x 1-3/4 H x 12-1/2 D
(mm) 483 W x 45 H x 318 D
- cTUVus Certified for US & Canada, FCC Parts 15 & 68 approved
- ELAN Home Systems reserves the right to change hardware and specifications w/out notice.

ELAN Door Stations

The C2 uses ELAN's DS3 Series Door Stations, available in flush- & surface-mount models. Door Stations are available in Brass, Ivory, Satin Nickel, Oil-Rubbed Bronze & Polished Chrome.



DSC3 Flush-Mount Door Station with Hi-Res Color Camera



DSF3 Flush-Mount Door Station



DSS3 Surface-Mount Door Station

Two-Year Limited Warranty

©ELAN Home Systems • 2009 • All rights reserved • CSC2 RevA
ELAN Home Systems is a trademark of ELAN Home Systems, LLC



Life Just Got Better.®

